

*Creative Design  
Look Book*

# BRANDING COLLATERALS



WHEN OUR TORCHES ARE LIT & YOU HEAR PEOPLE SAY ALOHA

WE ARE HAVING A LUAU!



**MAY  
23**

**JOIN  
US ON**

**8  
PM**



If you haven't partied Polynasion style, you havn't partied at all



# MENU DESIGNING

CURRIES		DESSERTS	
<b>SAMOAN CURRY</b> ☆		<b>CHOICE OF ICE CREAMS</b> 🌿	350
Veg 🌿	550	<b>AMBROSIA</b> 🌿	350
Chicken 🍗	750	(A melange of fruits with rich whipped cream)	
Lamb 🍖	850	<b>PASSION FRUIT CHEESECAKE</b> 🌿 ☆	450
Prawns 🍤	950	<b>FLAMBED CREPES BALLON RAUGE</b> 🍷 🌿	450
<b>THAI RED CURRY</b>		(Caramelised Strawberries & Hot Strawberries Smearred On Vanilla Ice Cream Stuffed Crepes)	
Veg 🌿	550	<b>CREPES SUZETTE</b> 🍷 🌿	450
Chicken 🍗	750	(Flambéd Pancake Served In Orange Triple Sec Sauce)	
Lamb 🍖	850	<b>HAUPIA</b> 🌿 ☆	450
Prawns 🍤	950	(Traditional Coconut Milk Dessert)	
<b>KATSU CURRY</b> 🍗	850	<b>CHOCO STRAWBERRY RETREAT</b> 🍷	450
(Japanese Style Served With Tonkatsu Sauce)		(Strawberry Mousse With Vanilla Ice Cream & Choco Soil)	
<b>CHICKEN</b> 🍗	750	<b>BANANA ROSEMARY MOUSSE</b> 🍷	450
<b>FISH</b> 🐟	850	(A Perfect Combination Of Banana And Fresh Rosemary, Served In Caramel Nest)	
<b>PORK</b> 🍖	850	<b>CLASSIC BLUEBERRY ISLAND</b> 🍷 ☆	450
<b>PRAWNS</b> 🍤	950	(Wai-Kiki Signature Dessert)	
<b>STAPLES</b>		<b>CHEF SPECIAL CHOCOLATE ISLAND</b> 🍷 ☆	450
<b>MASH POTATO /</b>	350	(Golden Bomb Shell In Chocolate Basket)	
<b>WASABI MASH POTATO /</b>			
<b>LEEK POTATOES</b> 🌿	350		
<b>SAUTÉED SPINACH /</b>	350		
<b>CREAMY SPINACH</b> 🌿			
<b>HAWAIIAN FRIED RICE</b> 🌿	400		
<b>POLYNESIAN SWEET FRIED RICE</b> 🌿	400		
<b>COCONUT RICE</b> 🌿	400		
<b>SAMOAN NOODLES</b> 🌿 ☆	400		
<b>WAIKIKI RICE</b> 🍗	500		
(Made With Shrimps, Chicken, Egg And Bean Sprouts)			

🌿 VEGETARIAN   🍗 NON-VEGETARIAN   🍷 LIQUER USED   ☆ SIGNATURE DISHES  
 ☆ GARNISHED WITH EDIBLE FLOWER

🌿 VEGETARIAN   🍗 NON-VEGETARIAN   🍷 LIQUER USED   ☆ SIGNATURE DISHES  
 ☆ GARNISHED WITH EDIBLE FLOWER

**Radisson**  
 HYDERABAD  
 HITEC CITY



**FOLLOW US**





# 3 FOLD MENU



## HOME OF THE MODERN TAIS

**VODKA TAI** 850  
Ketel One goes all in a sip with nuts and citrus  
KETEL ONE- 60 ML

**HONI HONI** 850  
Here's a whisky drink with the spice of the islands  
all wrapped into one  
JOHNNIE WALKER RED LABEL- 60 ML

**MANGO TAI** 450  
Even more tropical with mango  
CAPTAIN MORGAN- 60 ML

**GUAVA MAI TAI** 450  
Light and gold rums and guava  
CAPTAIN MORGAN - 30 ML, BACARDI 30 ML

## FRESHINIS

FOR THOSE SOULS WHO SEEK AND  
ENJOY A REALLY REFRESHING DRINK

**TROPICAL COCKTAIL** 750  
Gin, passion fruit nectar from 'down under' and  
lime make this a smooth refreshing cocktail  
GORDONS- 60 ML

**WAIKIKI TUK** 850  
Whisky and Triple sec with a touch of grenadine  
JOHNNIE WALKER RED LABEL- 60 ML

**SHOWERS OF A TIKI** 450  
Try the nectar of the tiki gods, spiced rum,  
orange liquor, and pineapple juice  
CAPTAIN MORGAN SPICED GOLD- 60 ML

## SWEET & SOURS

**MEXICAN SOUR** 850  
Tequila at its best  
TEQUILA- 60 ML

**SCOTCH SOUR** 750  
A magnificent drink. Fine whisky with  
crushed orange, lemon, and almond.  
JOHNNIE WALKER RED LABEL- 45 ML  
CAPTAIN MORGAN- 15 ML

**OUR OWN PUNCH** 450  
Fresh fruits, fine light and dark rums with a fillip of almond  
CAPTAIN MORGAN- 30 ML  
BACARDI- 30 ML

## FOR THE COCONUT LOVERS

**KAMA'AINA** 750  
"Old Timer" to you. Coconut, gin, triple sec and a hint of citrus  
GORDONS- 60 ML

**MAHIA** 450  
A snowy concoction of light rum with coconut and pineapple  
Innocent looking but watch it!  
BACARDI- 60 ML

**TUKTUK** 450  
A Piña Colada with vodka and a hint of orange  
SMIRNOFF- 60 ML



## THE POND LIBATIONS

MODERN CITIES, WHERE EVERYONE LIVES  
AND ENJOYS THE SAME SPACE FOR WORK  
AND LIVING. THESE DRINKS ARE INSPIRED BY  
THE HARMONIOUS POND,  
SIP THE COMMUNAL BOWLS.

**WAI KIKI RUM CUP** 1300  
Pineapple, light and dark rums with canned peach  
and passion fruit flavors- (serves 4 people)  
CAPTAIN MORGAN- 150 ML  
BACARDI- 60 ML

**KONDAPUR PUNCH BOWL** 1300  
A combination of light and gold rums, guava and  
apricot, topped with sparkling wine- (serves 2 people)  
CAPTAIN MORGAN- 90 ML  
BACARDI- 30 ML  
SPARKLING WINE- 120 ML

**SCORPION BOWL** 1300  
A festive concoction of rums, fruit juices and  
brandy with a whisper of almond, bedecked  
with a flower- (serves 4 people)  
CAPTAIN MORGAN- 150 ML  
BACARDI- 90 ML

**GOA BOWL** 1300  
Light and aromatic rums, fruit juices, grenadine  
and almond syrups (serves 4 people)  
CAPTAIN MORGAN- 150 ML  
BACARDI- 90 ML



# KIOSK DESIGNING





# POSTER & Tent Cards

**InnerBeing**  
Be nourished. Be natural. Be you.



**InnerBeing**  
Be nourished. Be natural. Be you.

**BE NOURISHED,  
BE NATURAL,  
BE YOU.**



We use local ingredients, with natural benefits, to create healthy and tasty food that will supercharge your day. Simple recipes for modern lifestyles - we create nourishing, balanced meals made of Super foods such as Millets, Quinoa and nourishing Super Seeds. We've tried them, now it's your turn.





# POSTER & CALENDAR DESIGNS

## QUINOA PORRIDGE

**12 gms**  
Fiber

**30 gms**  
Plant Protein



START YOUR DAY RIGHT  
Packed with Chia, Pumpkin and Sunflower Seeds

12 gms FIBER  
30 gms PLANT PROTEIN

NET WT 250g

GLUTEN FREE | PLANT PROTEIN | NO ADDED SUGAR | NO ADDED PRESERVATIVES | HIGH FIBER

Packed with  
Chia, Pumpkin &  
Sunflower Seed

### January

S	M	T	W	T	F	S
		1	2	3	4	5
6	7	8	9	10	11	12
13	14	15	16	17	18	19
20	21	22	23	24	25	26
27	28	29	30	31		

### February

S	M	T	W	T	F	S
					1	2
3	4	5	6	7	8	9
10	11	12	13	14	15	16
17	18	19	20	21	22	23
24	25	26	27	28		



**InnerBeing**  
Be nourished. Be natural. Be you.

A POWERHOUSE OF DELICIOUSNESS & NOURISHMENT IN EVERY MEAL!







**GLUTEN FREE**



**PLANT PROTEIN**



**NO ADDED SUGAR**



**NO ADDED PRESERVATIVES**

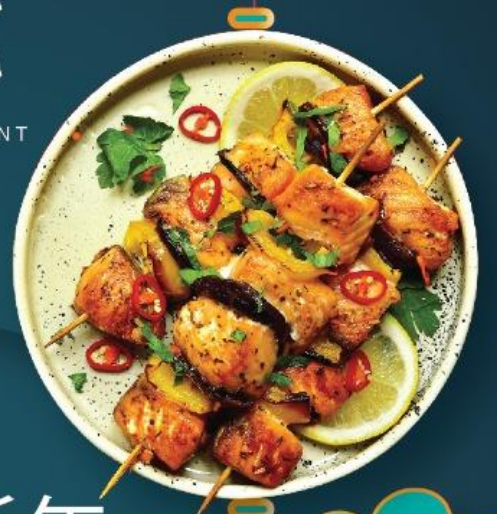


**HIGH FIBER**

[www.innerbeing.com](http://www.innerbeing.com)
[/innerbeingstore](https://www.facebook.com/innerbeingstore)
[/\\_innerbeing](https://www.instagram.com/_innerbeing)
 Customer Care: 1800 100 7001 | [orders@innerbeing.com](mailto:orders@innerbeing.com)



# LOGO, MENU & POSTER DESIGNING



中国新年

CHINESE  
NEW YEAR



Enjoy good fortune and great taste with our authentic Chinese Dinner buffet with a complimentary glass of wine. Gather with your family for an entertaining Live Band experience!

25 | JAN | 2020

TIME: 6PM TO 10.00 PM



HERITAGE  
PARK  
HOTEL  
H O N I A R A

VENUE:  
GG'S RESTAURANT

ENTERTAINMENT:  
LIVE BAND

RSVP- RAJ @ 7217972 | 24007

[www.heritageparkhotel.com.sb](http://www.heritageparkhotel.com.sb)





# BRANDING COLLATERALS





# MAGAZINE, POSTER & AD DESIGNS



**VERNIKA ART SPACE**

## NURTURING CREATIVE MINDST

COME BE A PART OF OUR FAMILY.

AGES 5 -9	AGES-10-12	AGES 13-15
<ul style="list-style-type: none"> <li>Drawing</li> <li>Colour Pencils</li> <li>Crayons</li> <li>Oil Pastels</li> <li>Poster Colours</li> </ul>	<ul style="list-style-type: none"> <li>Introduction to drawing</li> <li>About Art(Theory)</li> <li>Pencil Shading</li> <li>Crayons</li> <li>Oil Pastel</li> <li>Poster colour</li> <li>Landscape / Still Life</li> </ul>	<ul style="list-style-type: none"> <li>Introduction to drawing</li> <li>About Art (Theory)</li> <li>Pencil Shading</li> <li>Crayons   Oil Pastels</li> <li>Poster ColorLandscape / Still life</li> <li>Water Color   Still Life</li> <li>Birds are animals</li> <li>Landscape / Seascape</li> </ul>
<p><b>Fees- ₹ 2500/-</b> with material monthly 8 classes.</p> <p><b>WEEKLY TWO CLASSES ( ANY 1 HOUR )</b></p>	<p><b>Fees- ₹ 3000/-</b> with material monthly 8 classes.</p> <p><b>WEEKLY TWO CLASSES ( ANY 1 HOUR )</b></p>	<p><b>Fees- ₹ 3500/-</b> without material</p> <p><b>WEEKLY TWO CLASSES (2-HOURS PER CLASS)</b></p>

Call: TavitiRaju | Call: P. Sravanthi:  
**91 900 053 9280 | + 91 986 619 8154**

Address:  
 Plot number 11, ALIND Machinery Division Employee Colony  
 Sudarshan Nagar, Serilingampalli, Hyderabad - 500019

**virsa** Digital Sponser Partner  
 social DNA

Presents

## The Secunderabad NIGHT MARKET

### 14 April

**Tivoli Garden**  
 AN IDEAL VENUE FOR ROYAL OCCASIONS

Food Stalls	Clothes	Accessories	Shoes
Builders	Live Makeup	Counters	Corporates

**For Stall Booking**

Meenu Soni | Sahiba Kunwar Lamba  
 8008933155 | 9989017722



**InnerBeing**  
 Be nourished. Be natural. Be you.

### Do diabetes or heart disease run in your family? Good nutrition doesn't come in a pill

<p><b>JOWAR IDLI</b>              High fiber diet helps lower the risk of diabetes</p> <p>NET WT 500g</p> <ul style="list-style-type: none"> <li>8.05g Protein</li> <li>6.64g Dietary Fiber</li> <li>82.9mg Calcium</li> </ul>	<p><b>FOXTAIL MILLET</b>              Best source of protein helps Improve your stamina</p> <p>NET WT 500g</p> <ul style="list-style-type: none"> <li>13.40g Protein</li> <li>8.50g Dietary Fiber</li> <li>28.10mg Calcium</li> </ul>
<p><b>RAGI CHOCOLATE DRINK</b>              Rich source of calcium helps develop strong bones</p> <p>NET WT 250g</p> <ul style="list-style-type: none"> <li>13g Plant Protein</li> <li>14g Dietary Fiber</li> <li>50% Daily Value Calcium</li> </ul>	

www.innerbeing.com | /innerbeingstore | /\_innerbeing  
 1800 100 7001 | orders@innerbeing.com



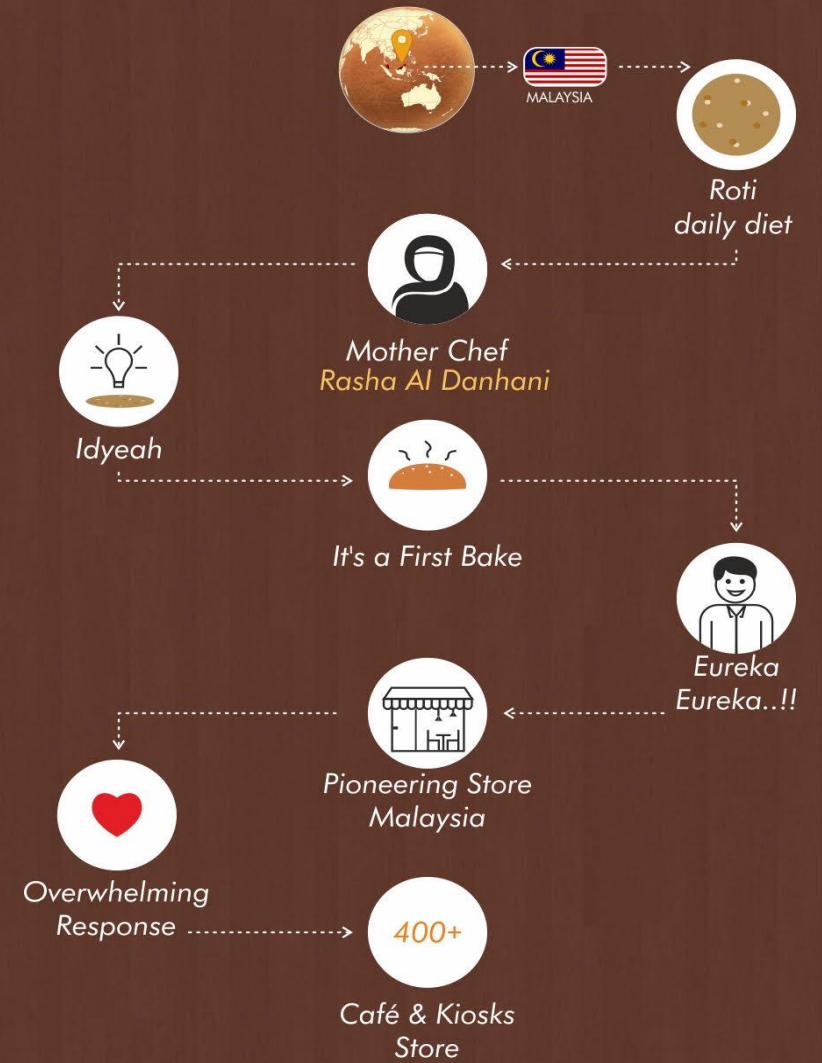
# CREATIVE DESIGNING

Pappa Roti

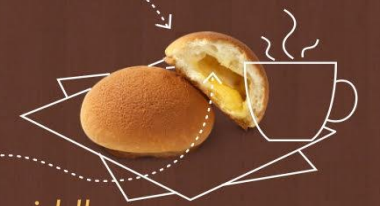


f @ /PappaRotiMumbai

Pappa Roti  
father of all buns



- Product**
- **Outer Coating:** Sweet caramelized coffee cream (Hot, Crispy & Crunchy exterior)
  - **Salted butter in the middle** (Perfect mix of sweet and salty)



**Places**

- Malaysia
- China
- Vietnam
- Abu Dhabi
- Kuwait
- Saudi Arabia
- UAE
- Oman
- India
- Indonesia
- Bangladesh
- United Kingdom
- Australia



**Process**



- 10 minutes from oven to table
- Hot and Fresh
- Hygenic

- 5k+ Staff
- 60% Women employees

**People**

**Food safety**

- We at Papparoti (M) Sdn. Bhd. are a manufacturer of bakery products.

papparoti.com





***THANK YOU!***